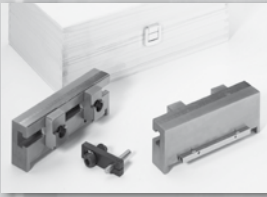


# Special jaws and accessories



**Plus 3D for TC, NCN and DUO LOCK**  
pag. 11. 2



**Middle jaw CLAK SYSTEM**  
pag. 11. 4



**Jaw with rolls**  
pag. 11. 4



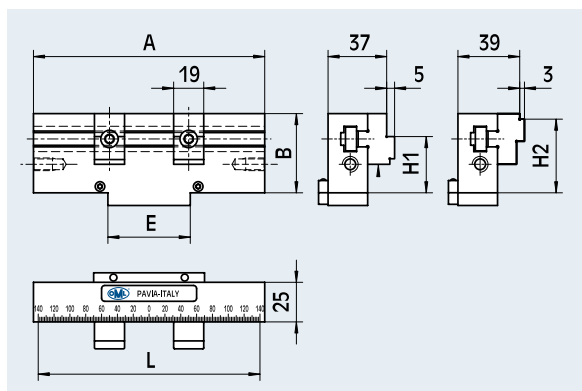
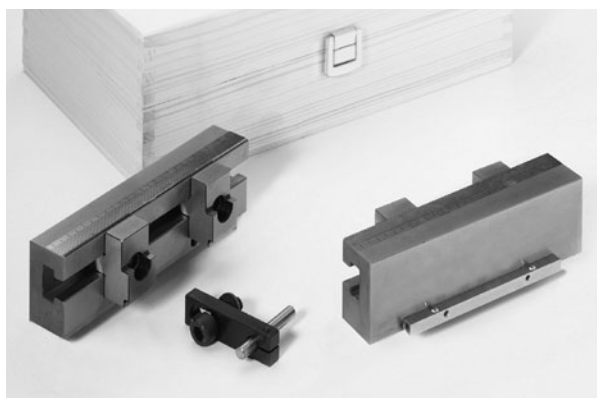
**Pair of jaws with grippers UGE**  
pag. 11. 4



**Pair of jaws "GRIP"**  
pag. 11. 5

# Special jaws and accessories

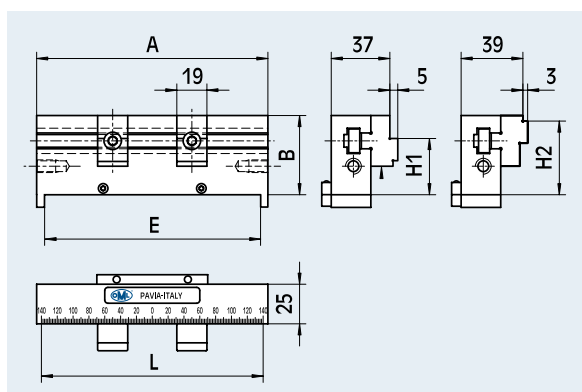
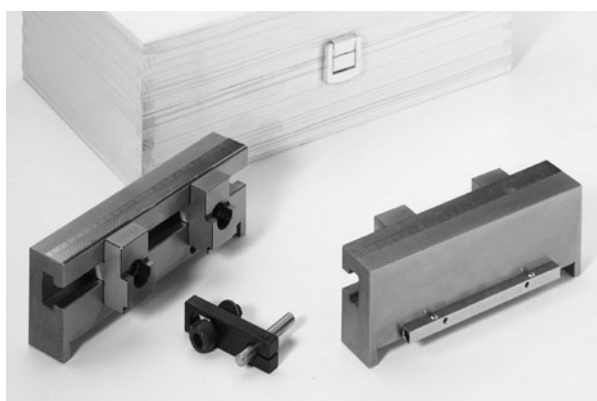
## Plus 3D for TC



Cod.	for type	A mm	B mm	E mm	H1 mm	H2 mm	L mm
58 02 91 09	TC/MC 150	146	50	52	35.5	46.5	140

PLUS-3D jaws are indicated for the machining of the workpieces on 3 sides

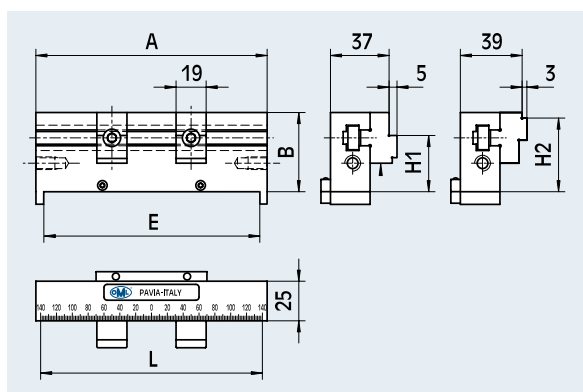
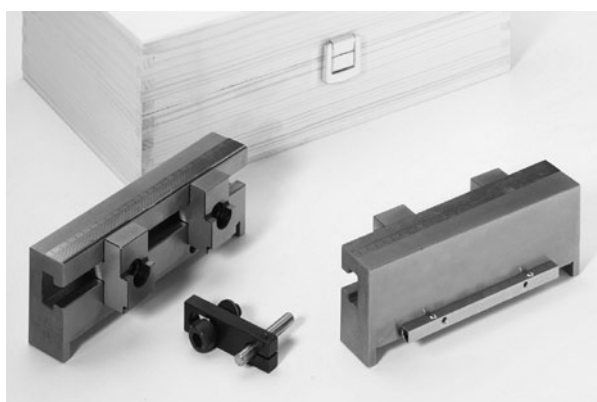
## Plus 3D for NCN



Cod.	for type	A mm	B mm	E mm	H1 mm	H2 mm	L mm
58 47 91 09	NCN 125	136	39.5	126	25	36	120
58 48 91 09	NCN 160	174	49.8	164	35.3	46.3	160

PLUS-3D jaws are indicated for the machining of the workpieces on 3 sides

## Plus 3D for DUO LOCK

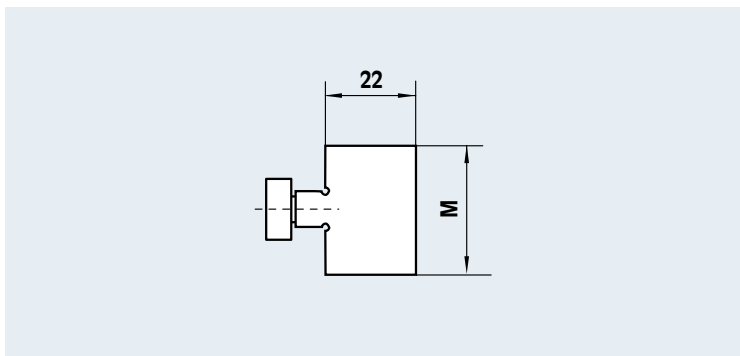


Cod.	for type	A mm	B mm	E mm	H1 mm	H2 mm	L mm
58 71 91 09	DL 100	110	31,4	101,6	21	28	100
58 72 91 09	DL 150	161	44,1	152,4	29,5	40,5	140

PLUS-3D jaws are indicated for the machining of the workpieces on 3 sides

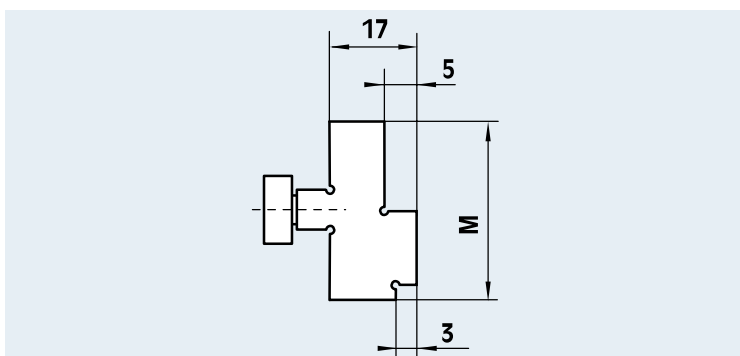
## Soft steel jaw

Cod.	for type	M mm
58 47 79 09	TC 150/NCN/ DL 150	32
58 71 79 09	DL 100	24,8



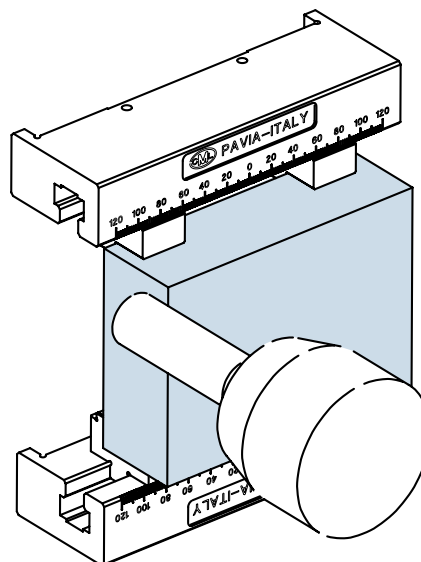
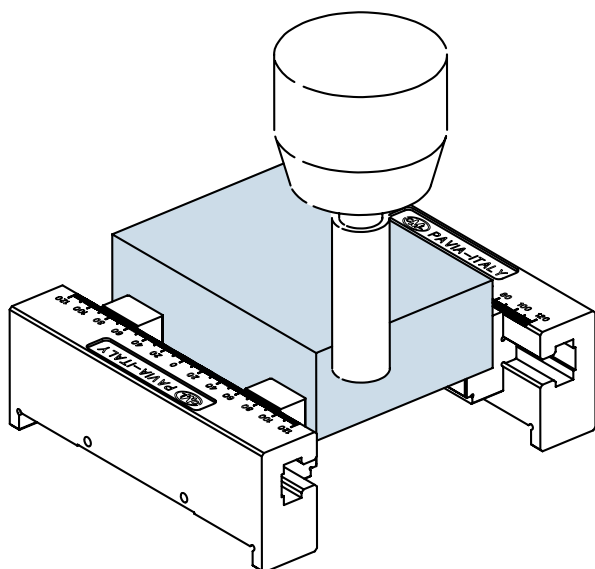
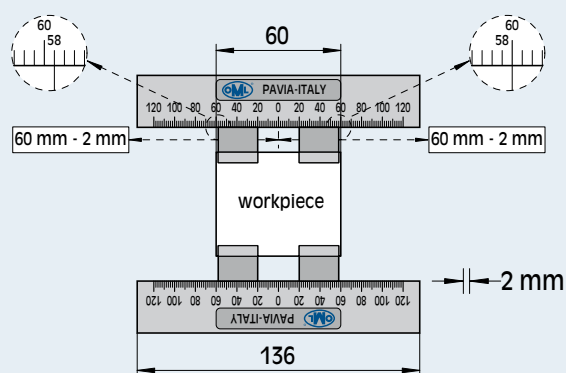
## Formed steel jaw

Cod.	for type	M mm
58 47 78 09	TC 150/NCN/ DL 150	32
58 71 78 09	DL 100	24,8



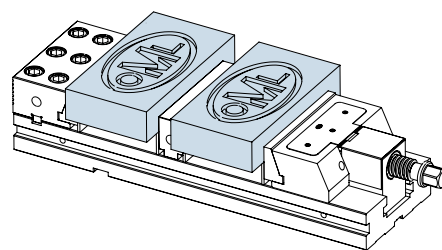
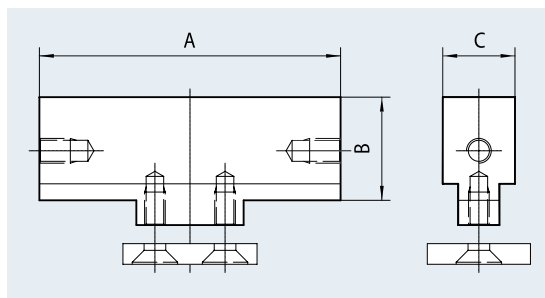
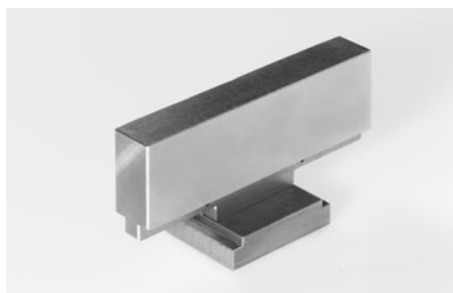
## Plus 3D

### Application example



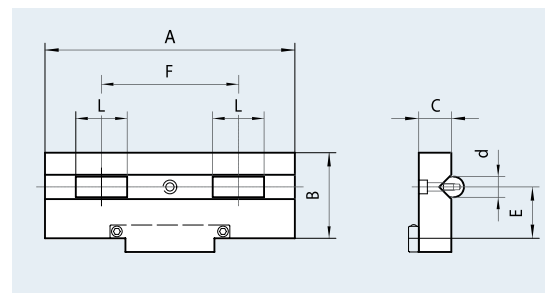
# Special jaws and accessories

## Middle jaw CLAK SYSTEM

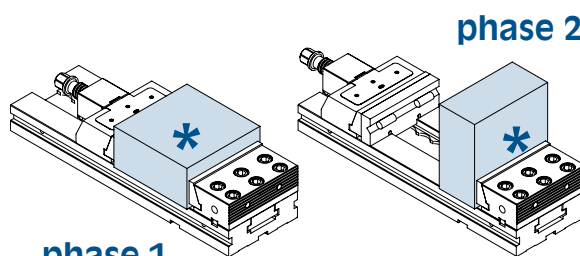


Cod.	for type	A mm	B mm	C mm
58 01 41 09	TC110/MC 125	106	40	32
58 02 41 09	TC/MC 150	146	50	32
58 03 41 09	TC/MC 200	196	70	48
58 04 41 09	TC 250	246	80	48

## Jaw with rolls



Cod.	for type	A mm	B mm	C mm	d mm	E mm	F mm	L mm
58 01 97 09	TC 110/MC 125	106	40	19	12	25	60	30
58 02 97 09	TC/MC 150	146	50	19	12	30	80	30
58 03 97 09	TC/MC 200	196	70	28	16	40	110	40
58 04 97 09	TC 250	246	80	28	16	45	140	40

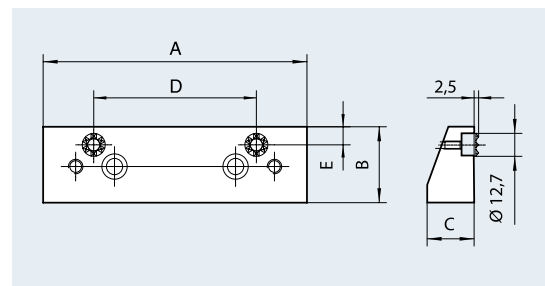


phase 1

phase 2

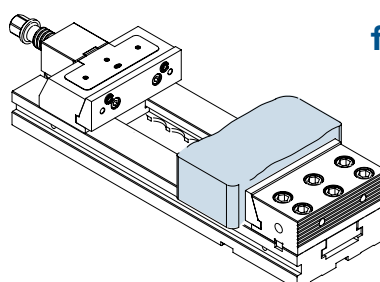
\* machined surface

## Pair of jaws with grippers UGE



for raw workpieces

Cod.	for type	A mm	B mm	C mm	D mm	E mm
58 02 45 09	TC/MC 150	146	42	26	90	10
58 03 45 09	TC/MC 200	196	60	31	160	12
58 04 45 09	TC 250	246	68	43	200	12



## Pair of jaws "GRIP"

with included 1 pair of parallels CLAK



Cod.	for type	H PARALLELS mm
58 01 51 09	TC 110	38
58 02 51 09	TC 150	48
58 06 51 09	MC 150	48
58 03 51 09	TC 200	68
58 04 51 09	TC 250	78

These jaws allows to blank the workpiece.  
This is possible because the workpiece  
can be clamped for only 2mm

